



# National Chain Group



## At Your (Full) Service

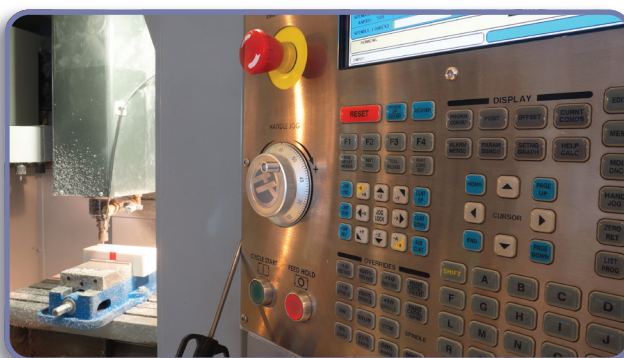
*For the National Chain Group, chain was only the start to becoming the industry's single source for all manufacturing needs*

**F**ew companies in the jewelry industry have the scope of the National Chain Group. Yes, it still sells chain—the foundation of the business upon its launch in 1986.

In fact, it remains the leading supplier of pendant and fashion chain in the industry, producing up to 1.5 million feet per week. But, to do it justice, you'd have to add quite a few plus signs after "chain" to get a true idea of what the company can deliver.

National Chain Group now offers a wide range of premier findings, mesh styles, beads of all types and styles, seamless tubing, precision stamps, and castings. Plus, National's mill produces thousands of ounces of metals per week, all responsibly sourced, for customers of all types and sizes—from volume producers to specialty manufacturers. (To put the output in visual terms, the mill's current weekly production of wire alone would, if put end to end, stretch from the northernmost tip of Maine down to the Florida Keys.)

The company also has invested heavily in both the latest technologies and industry-leading expertise to ensure it remains at the forefront of innovation. And it puts that expertise to its customers' advantage, offering custom services ranging from 3-D manufacturing and casting to laser engraving and plating to stamping and UV printing to packaging and distribution. If you can think of it, they can do it.



Customers can choose from the menu of custom services—or it can simply ask National to use its capabilities and expertise to fully develop, produce, and merchandise the product. National is the ultimate full-service contract manufacturer: It can take any idea, whether it's drawn on a cocktail napkin or presented in detail, and ensure the final product matches its customer's vision, at the price point needed to compete.

In essence, National Chain is now the industry's "one-stop shop" for crucial jewelry materials, components, custom services, and full-on contract manufacturing.

So how does National set its customers on the path to success? Turn the page and see...



*National Chain Group*

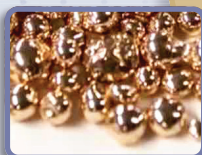
# Your Path to Full-Service Manufacturing

*For everyone from established manufacturers with recognized brands to small design firms just starting to make a name for themselves, National Chain is the "one-stop shop" that keeps businesses moving forward.*



## Responsibly Sourced Materials, Guaranteed.

National scours its supply chains to ensure its sources meet the highest standards in safety, human rights, healthy working conditions, and environmental practices. A certified member of the Responsible Jewellery Council, it has consistently passed the council's rigorous Code of Practices audits, as well as the audits of all major retailers. It also offers certified recycled metals.



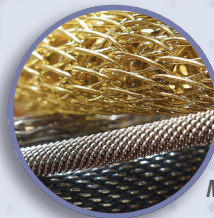
## The Mill: Sophisticated Metals, Rigorously Tested.

With decades of experience, National's metallurgists and engineers know how to meet the tightest tolerances: drawing wire down to the diameter of a human hair, or reducing the walls of tubing so they're as thin as a wafer. National offers a range of stock gold and silver options (including solder-filled wire), and it can also customize formulas. Throughout fabrication, every alloy undergoes a rigorous series of tests to maintain the highest levels of strength and durability.



## Jewelry Products You Can Count On.

From its responsibly sourced, meticulously manufactured metals, National produces some of the finest jewelry products available. The industry's largest supplier of precious metal chain, National also offers premium tubing, beads, decorative and functional findings, mesh, stamps, and castings. Its depth of expertise is so impressive that it's been the subject of two documentaries: a "Modern Marvel" profile on the History Channel and a "How It's Made" episode on the Discovery Channel.



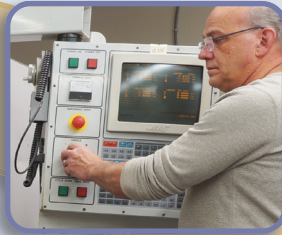
*Findings*

*Chain*

*Beads*

*Castings*

*Mesh*



## **+ Custom Services: Put National's Skills and Expertise to Work for You.**

National's capabilities run the gamut: laser engraving, tool & mold design, powder coating, UV printing, plating, stone setting, hub & die cutting, casting, stamping, CAD design and manufacturing...and that's only a *partial* list. If you need it, we can do it.



## **+ Contract Manufacturing: Your Partner in Product Development, Manufacturing, & Merchandising.**

You can entrust your product idea to National's Product Development team, which will take your design concept—even something as simple as a sketch on a cocktail napkin—and smooth out any engineering challenge to ensure the most cost-effective manufacturing. They'll then use our team of 1,150 experienced professionals in the United States and our offshore manufacturing operations to turn out a creation that carries your brand look and style, at the price point you need.



## **▬ Your Single Source for Everything You Need.**

From responsibly sourced mill materials to premier products and custom services to the attention and care needed to partner on your next line of finished jewelry, National is there for you.



# We're Ready for Your Next Order

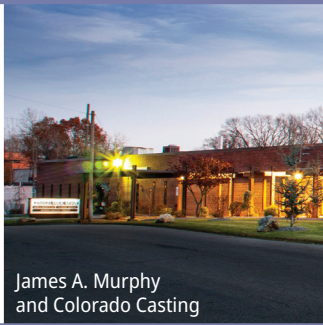
*Based since its founding in Warwick, Rhode Island, National Chain Group has expanded its manufacturing space to more than 300,000 square feet, with several locations.*



National Research & Development



National Fabricated Products



James A. Murphy  
and Colorado Casting



Standard Chain Factory

## National's Offshore Manufacturing Operations

National prides itself on its ability to control costs and achieve the price points its customers require to be competitive in the world market. To ensure its customers can compete effectively, National has developed a facility in the Dominican Republic. "We can cover a range of needs," says National Chain CEO Steve Cipolla. "If you now outsource manufacturing to foreign countries or buy materials from foreign suppliers, we have the expertise and resources to provide a better price."



Santo Domingo Assembly Facility



Thanks to its vertical system and far-reaching operations, National Chain can control costs, source needed supplies responsibly and without delays, and maintain its delivery schedules—capabilities that, especially in today's world of challenged supply chains, become its customers' unparalleled competitive advantage.

***So, how can we serve you?***



55 Access Road, Warwick, Rhode Island 02886  
401.732.6200 • [www.natchain.com](http://www.natchain.com)

Learn More About Us

